



---

CONCRAFT HOLDING CO., LTD.

(Stock Symbols: 4943.TW)

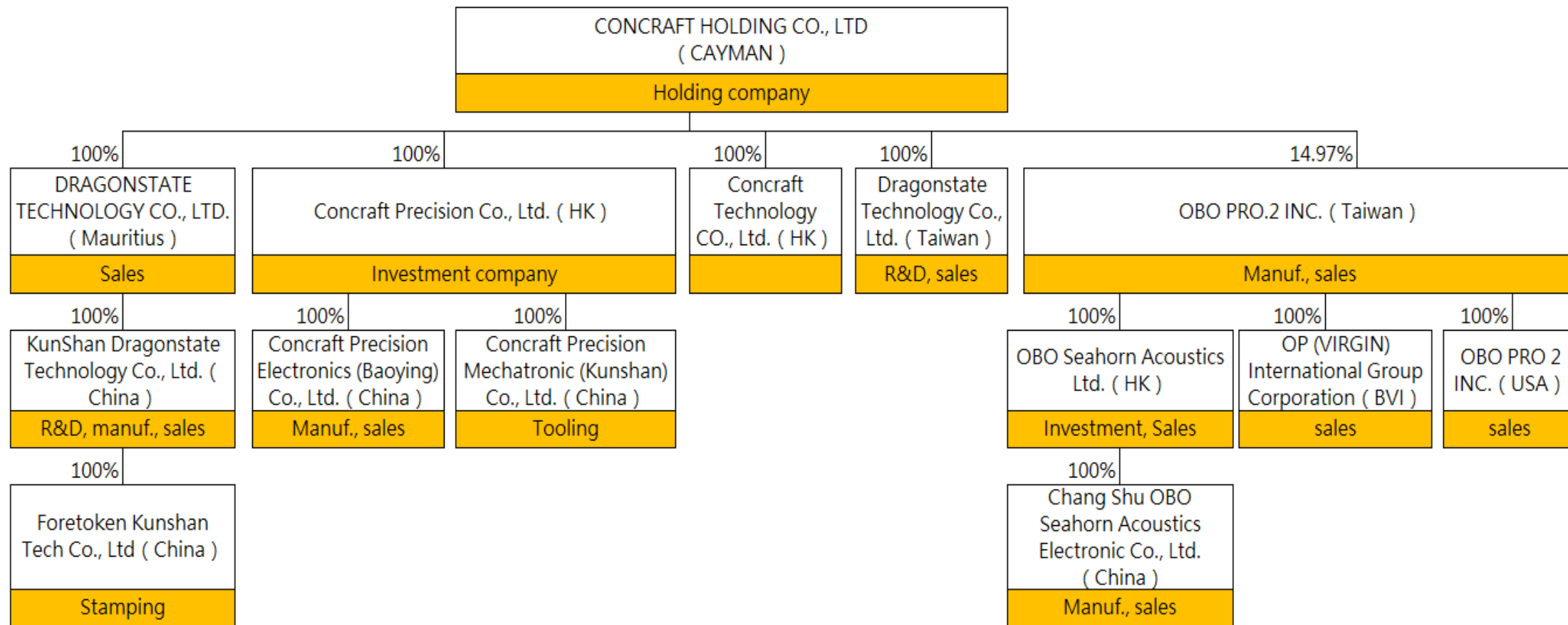
Innovation Creates the Value !

# Agenda

---

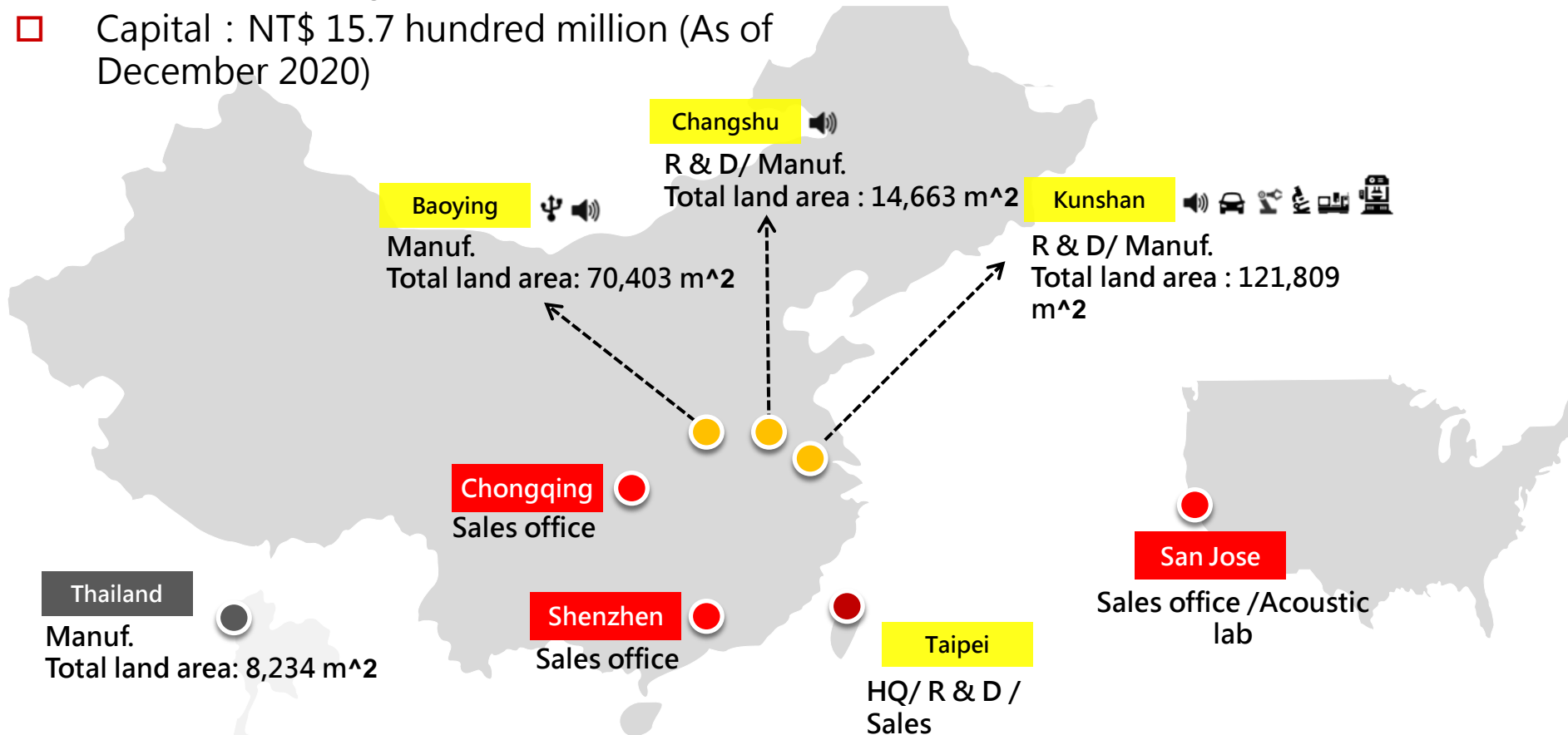
- Company Overview
- Quarterly Sales Revenue/ Gross Profit
- Net Income/ EPS
- Relevant Financial Information
- Top 10 Customers
- Dividend Policy

# Company Overview



# Company Overview

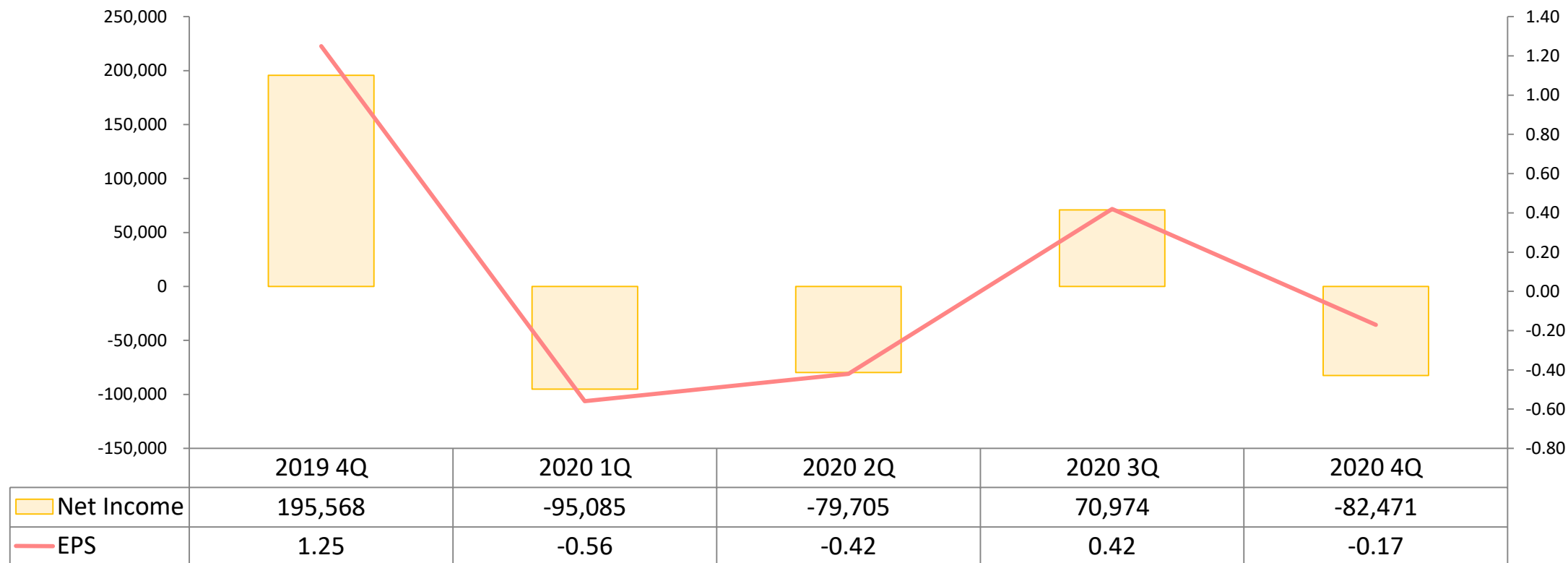
- ❑ Established in 1991 ; Chairman : Chao-Sheng Lu ; General Manager : Kuo-Chi Lee
- ❑ Capital : NT\$ 15.7 hundred million (As of December 2020)



# Net Income & EPS

NTD thousand

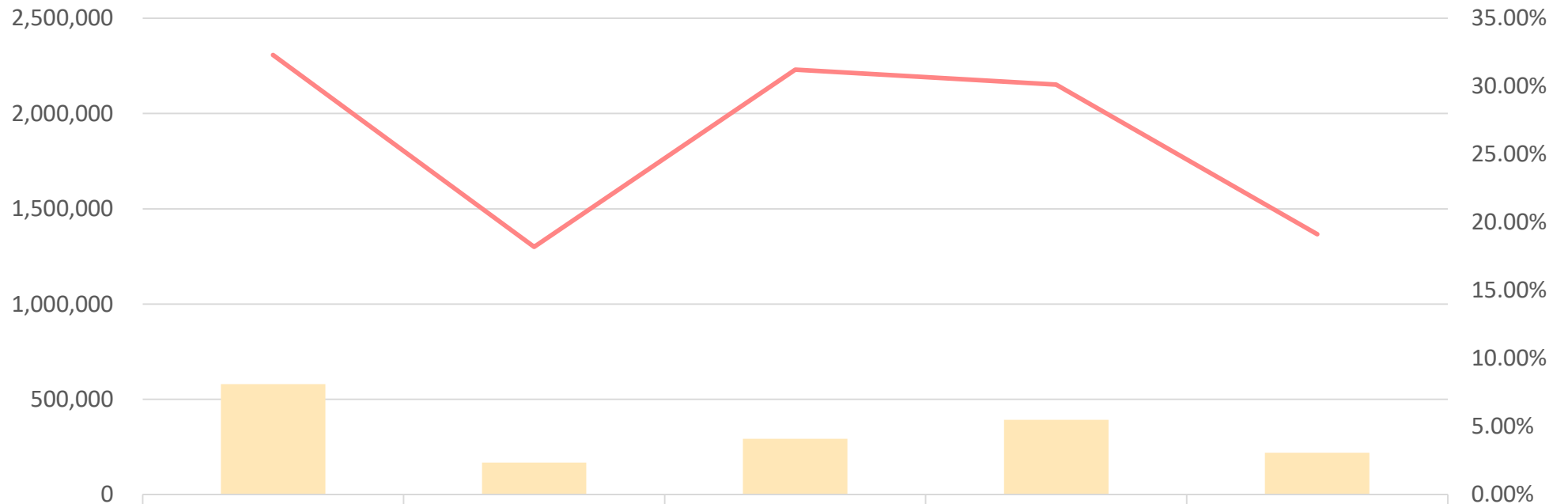
Net Income & EPS



# Quarterly Gross Profit

NTD thousand

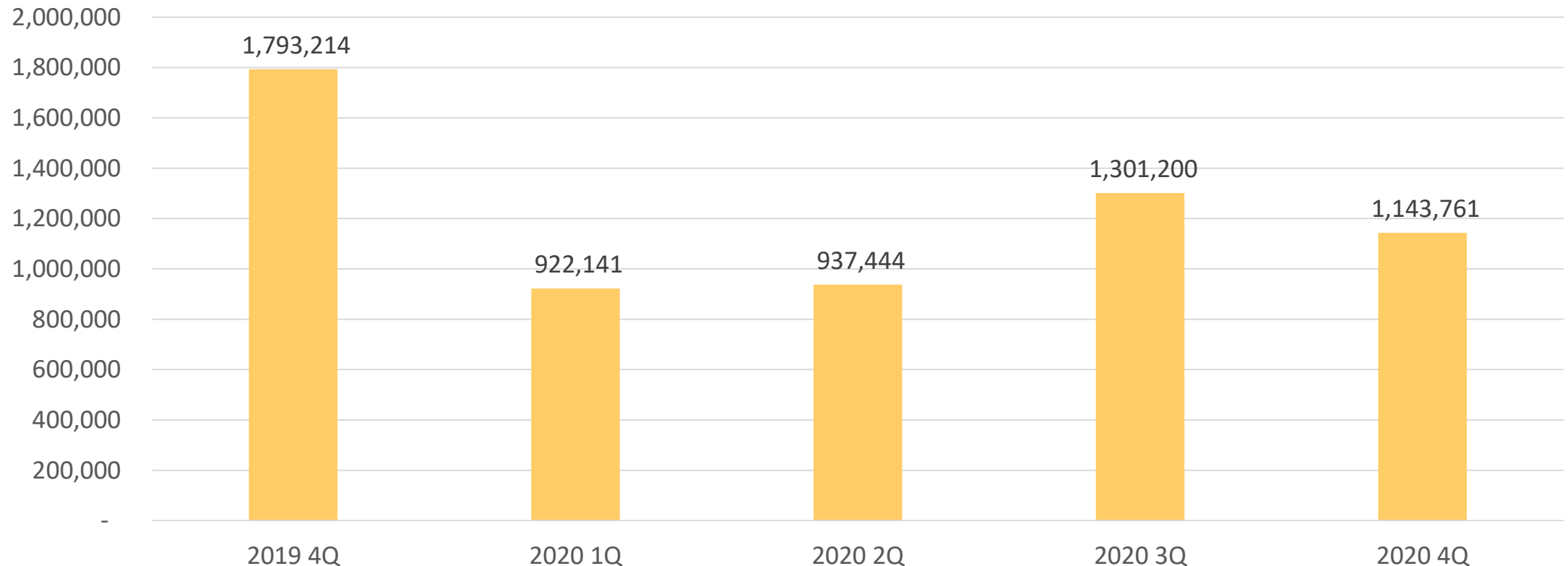
Gross Profit & Gross Profit Margin



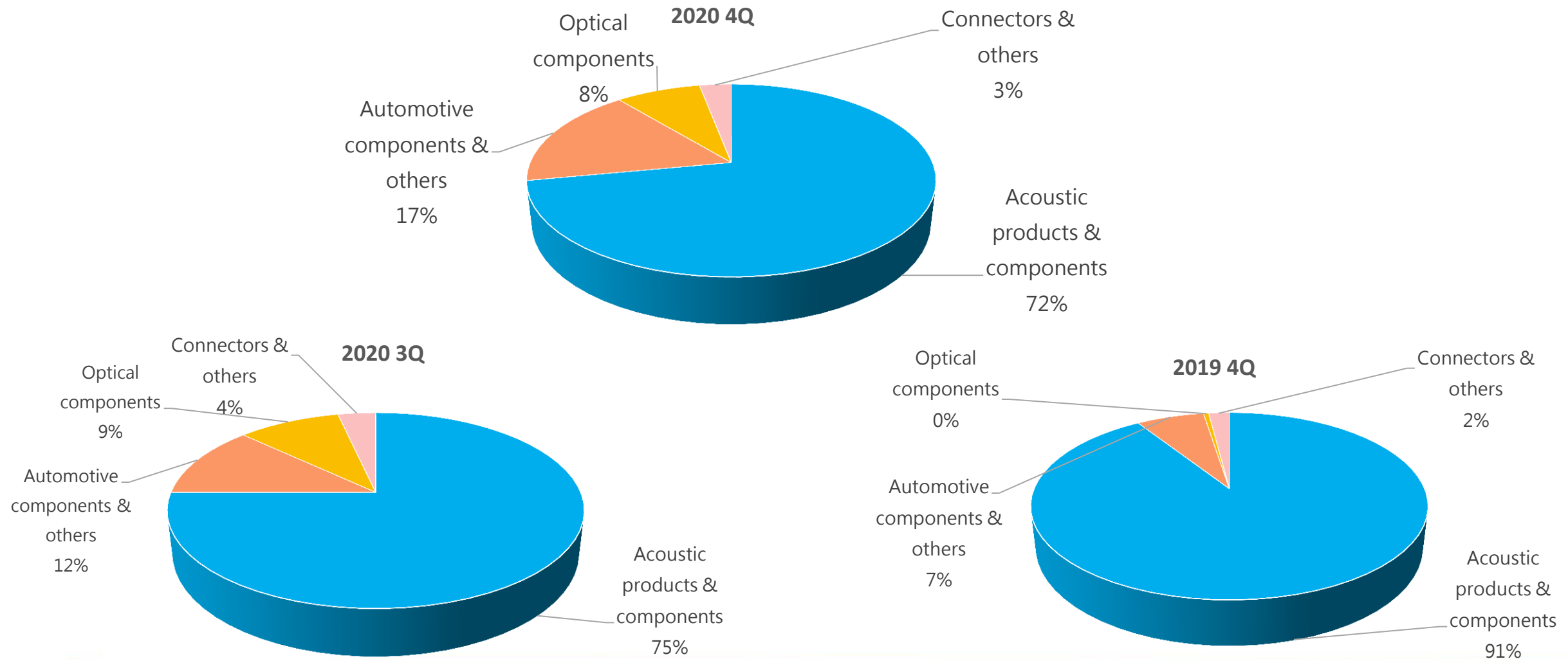
	2019 4Q	2020 1Q	2020 2Q	2020 3Q	2020 4Q
Gross Profit	579,185	167,811	292,717	392,075	218,775
Gross Profit Margin	32.30%	18.20%	31.23%	30.13%	19.13%

# Quarterly Sales Revenue

NTD thousand

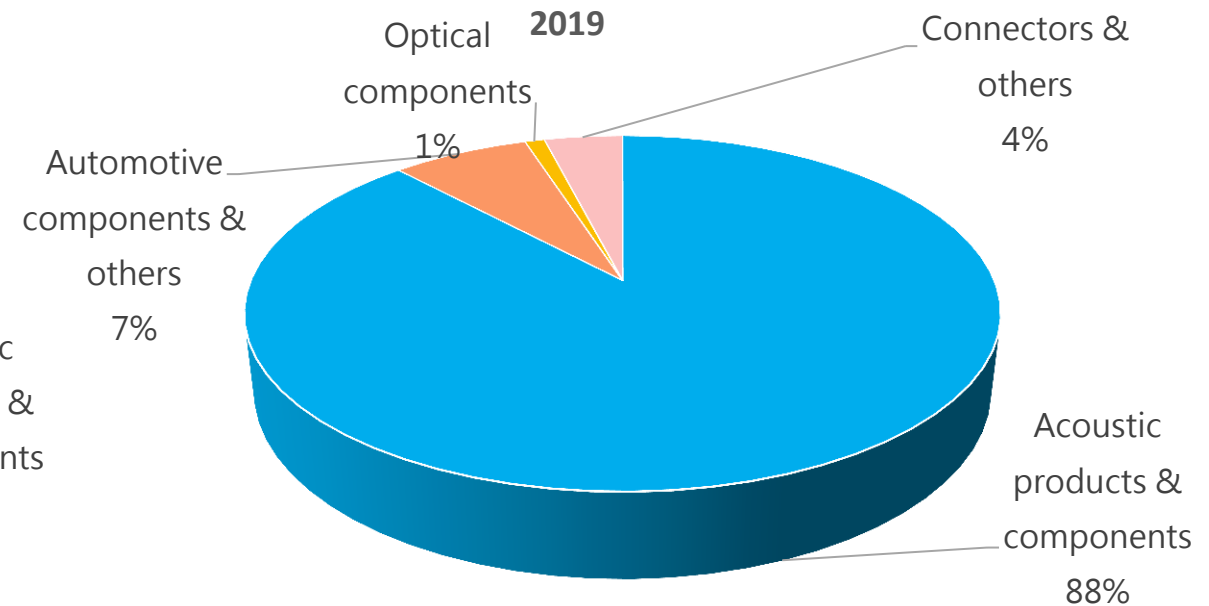
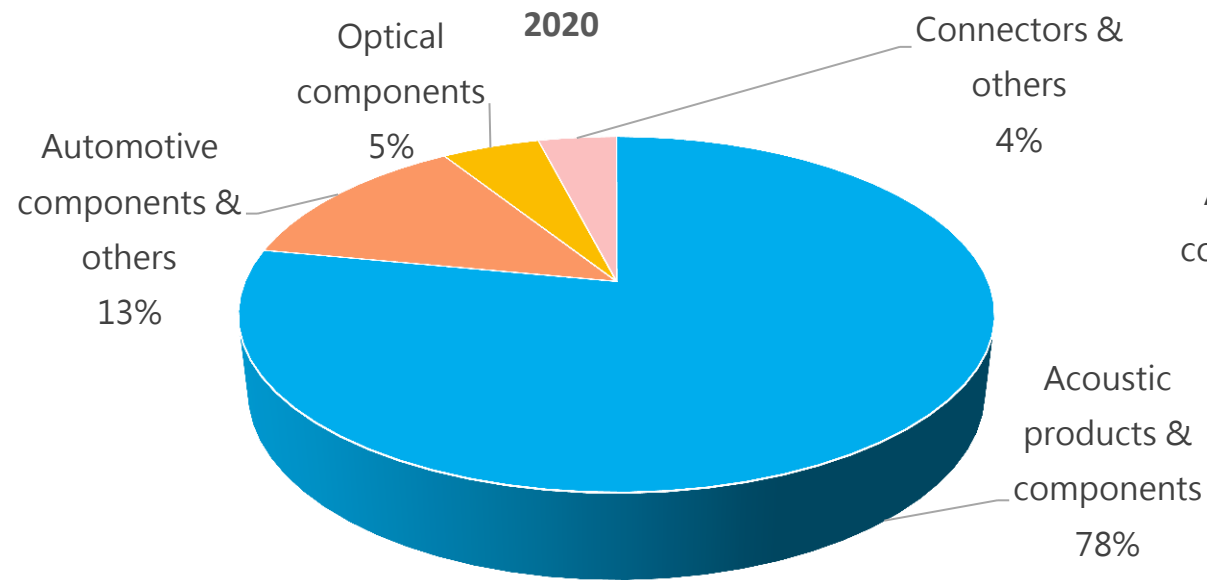


# Major Products and Sales Contents (Quarter)





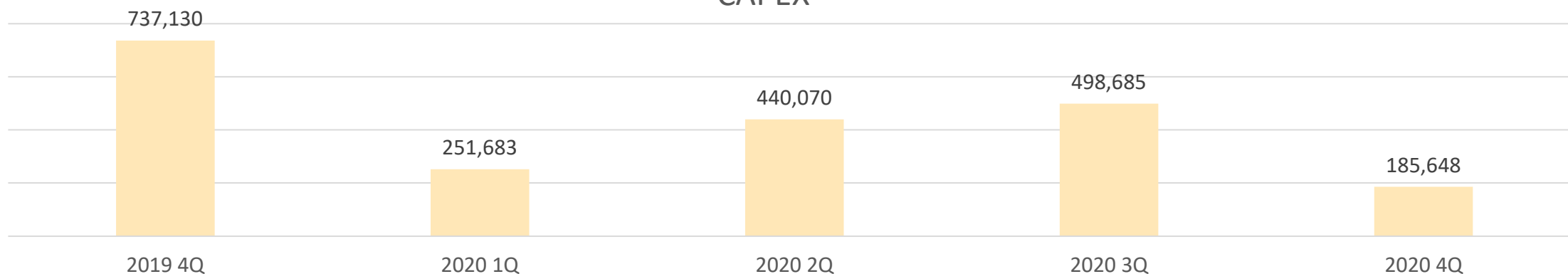
# Major Products and Sales Contents (Year)



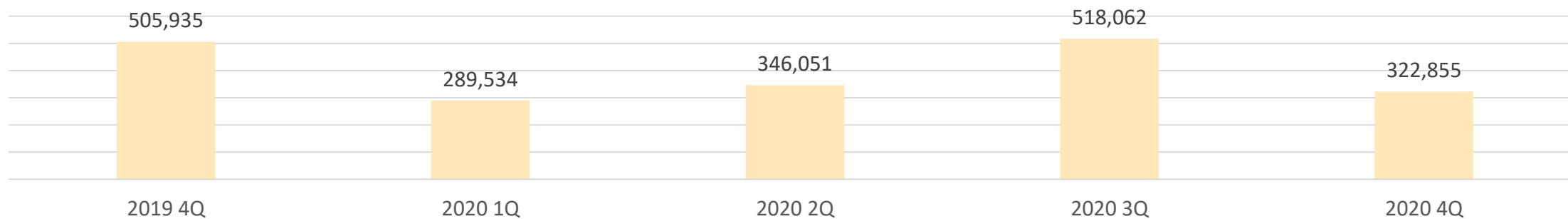
# CAPEX & EBITDA

NTD thousand

## CAPEX



## EBITA



# Top 10 Customers

	FY 2016		FY 2017		FY 2018		FY 2019		FY 2020	
Acoustic components & Tooling	OO Customer OO Customer Others	56%	OO Customer OO Customer OO Customer Others	84%	OO Customer OO Customer OO Customer Others	89%	OO Customer OO Customer OO Customer LUXSHARE SUNWODA Desay Battery Others	88%	OO Customer OO Customer LUXSHARE SUNWODA Desay Battery FOXCONN Others	78%
Connectors	SPG COMPAL PEGATRON INVENTEC ASUS LITEON SAMSUNG CALCOMP others	42%	SPG COMPAL INVENTEC PEGATRON SAMSUNG HON HAI ASUS others	12%	SPG INVENTEC PEGATRON SAMSUNG HON HAI CALCOMP others	6%	INVENTEC FOXCONN others	4%	SAMSUNG others	4%
Optical components & Tooling	others	1%	others	0%	others	0%	others	1%	Marian AMS others	5%
Automotive Components & Others	others	1%	others	4%	BOSCH others	5%	BOSCH&UAES Toshiba-M. Others	7%	BOSCH&UAES Others	13%

# Dividend Policy

- Subject to Cayman Islands law, the amount of dividends shall be at least 50% of the net profit after the deduction of regulations. Cash dividends shall comprise a minimum of 10% and a maximum of 100% of the total dividends allocated to Shareholders.

Distribution Table	Profit Distribution				APIC Distribution			
	Cash Dividend		Stock Dividend		Cash Dividend		Stock Dividend	
	Per value Per share (NTD)	Total Amount (NTD thousand)	Per value Per share (NTD)	Total Amount (NTD thousand)	Per value Per share (NTD)	Total Amount (NTD thousand)	Per value Per share (NTD)	Total Amount (NTD thousand)
2011	1	43,578	-	-	-	-	1	43,578
2012	0.5	24,968	-	-	-	-	0.5	24,968
2013	0.5	26,216	-	-	-	-	1	52,433
2014	0.5	33,838	0.5	33,838	-	-	0.5	33,838
2015	1	79,443	-	-	-	-	-	-
2016	1.54	153,103	-	-	-	-	0.5	51,034
2017	5	535,859	-	-	-	-	1	107,172
2018	5.15	647,834	-	-	-	-	0.47	58,894
2019	0.49999115	68,081	-	-	-	-	1.49997346	204,242

**THANK YOU**