



CONCRAFT HOLDING CO., LTD.
Investor Conference
Stock Symbols : 4943.TW

2022

Sustainable Technological Innovation, Creating Brand-New Value

Disclaimer

- The financial information disclosed in this presentation has not been audited or reviewed by accountants, and all information is for reference only. For details, please refer to audited or reviewed Financial Reports.
- This presentation and accompanying related data and contents contain predictive information are obtained from internal and external sources.
- The company's actual future operating results, financial status and business prospects, may differ from the estimates expressed or implied by these forecast information, and the reasons may come from various risks beyond the control of the company.
- The future prospects mentioned in this presentation reflect the Company's views until now. For these opinions, if there are any changes or adjustments henceforward, the company is not responsible for reminding or updating at any time.



Agenda

1. Corporate Profile
2. Main Product Application
3. Performance and Prospect



Corporate Profile

Corporate Profile

Provides customers with complete solutions for automotive, semiconductor, and medical.

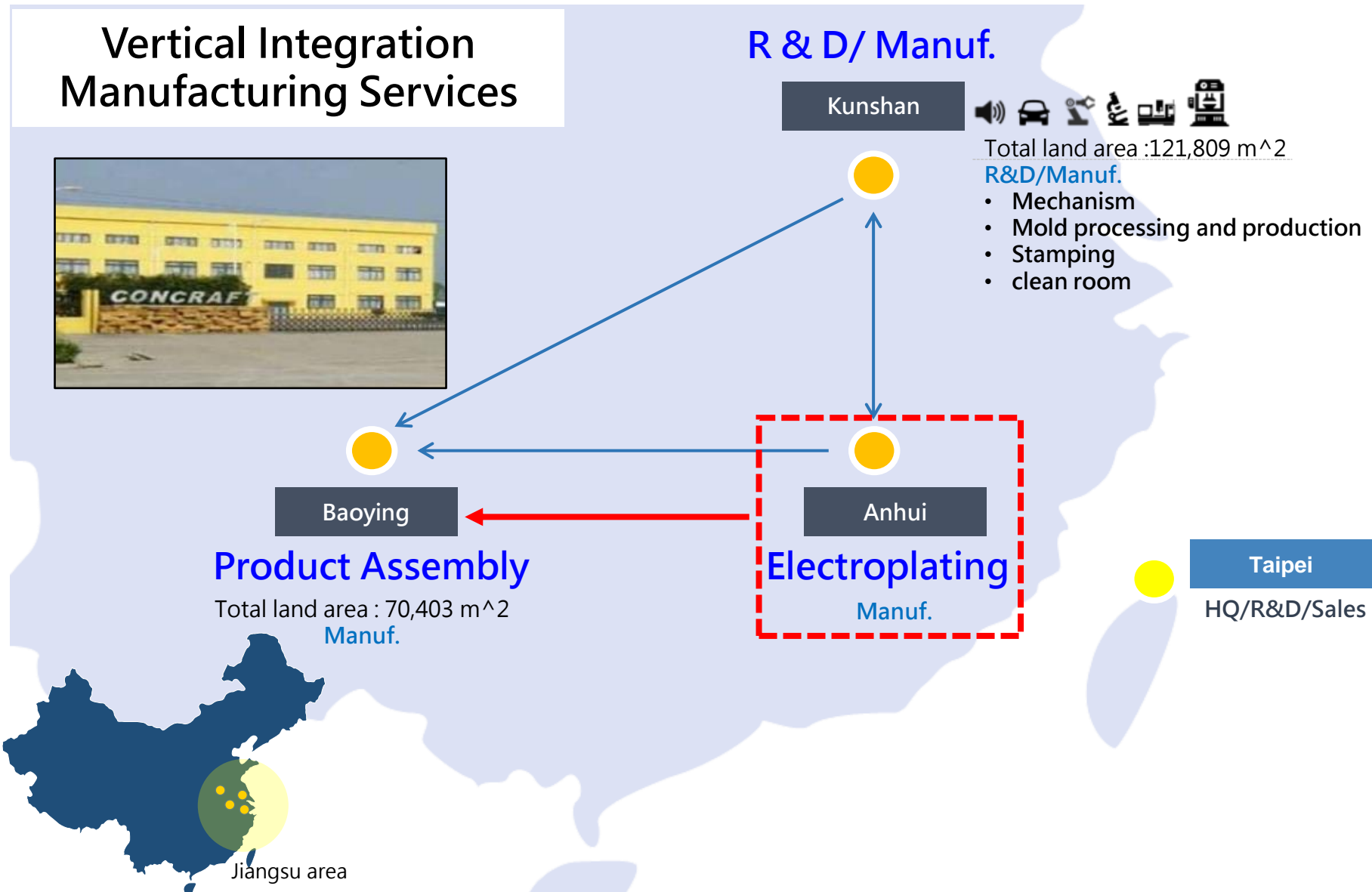


Kunshan Factory

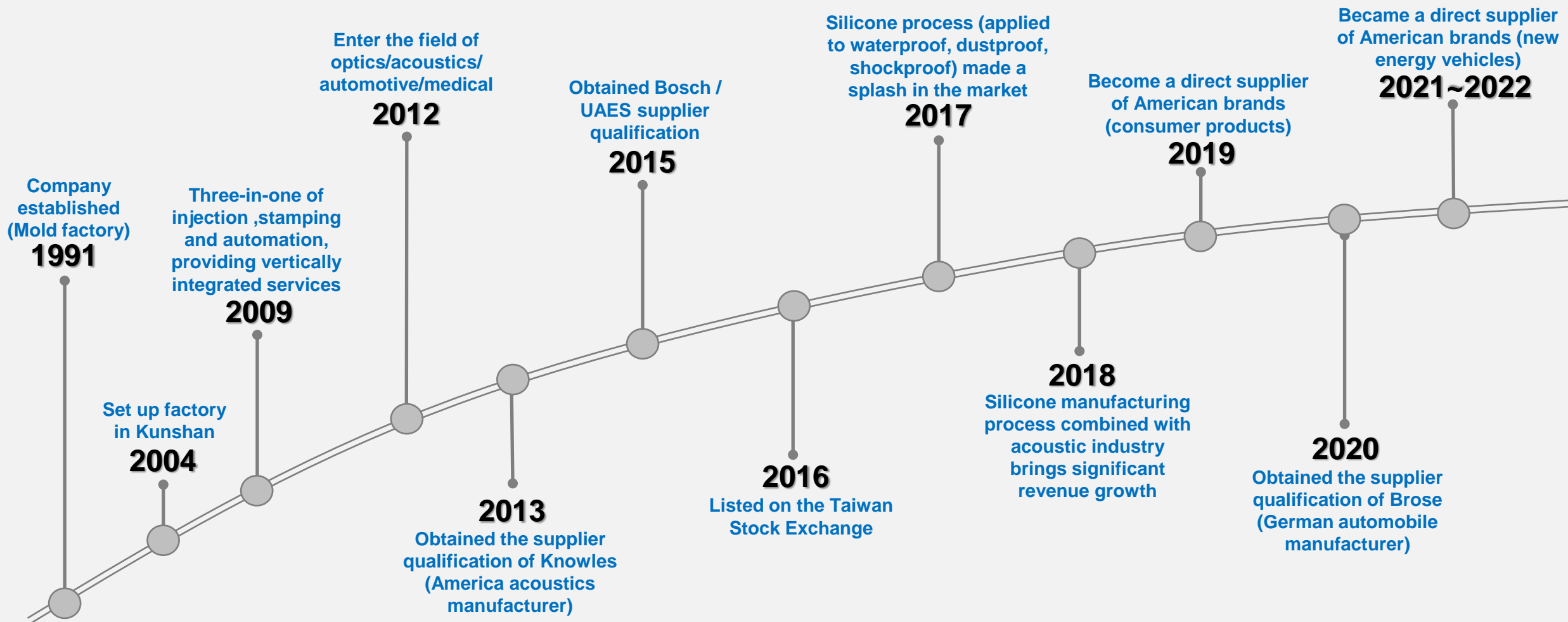
- Originated from Taiwan, located in China, with a global scope vision. Two major production bases have been established successively in Kunshan, Suzhou and Baoying, Yangzhou.
- In the core value of excellent engineering technology and innovative ability, we provide customers with one-stop services of mold processing, precision injection molding, silicone molding, metal stamping and automatic assembly. Product areas include medical components, automotive components, acoustic components, optical components, and consumer electronics connectors.
- Established in 1991 ; Chairman : Chao-Sheng Lu ; General Manager : Kuo-Chi Lee
- Capital : NT\$ 15.64 hundred million (As of November 2022)

CONCRAFT Group Locations

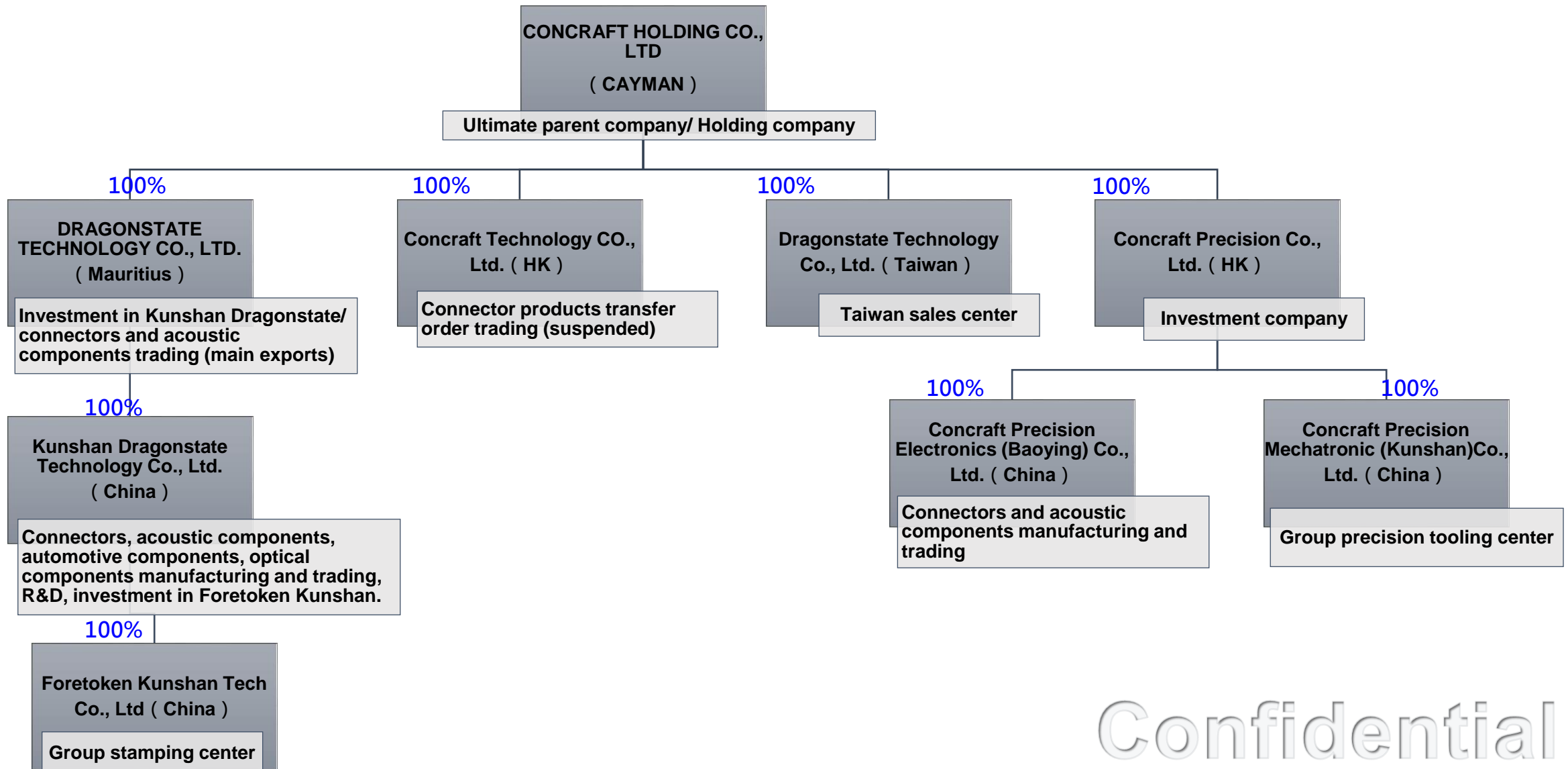
Vertical Integration Manufacturing Services



CONCRAFT Group Milestones



CONCRAFT Group Organization Chart



Confidential



Product & Market Application

Main Automotive Products

Wiper Nozzle Module •



ECU Connector •



Power Unit •



Functional Parts



• Ring Electromechanical Parts



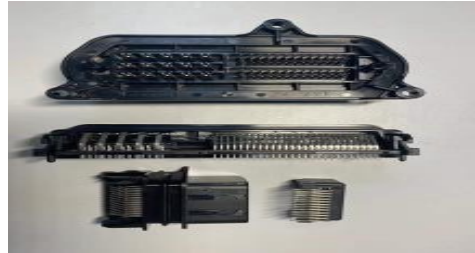
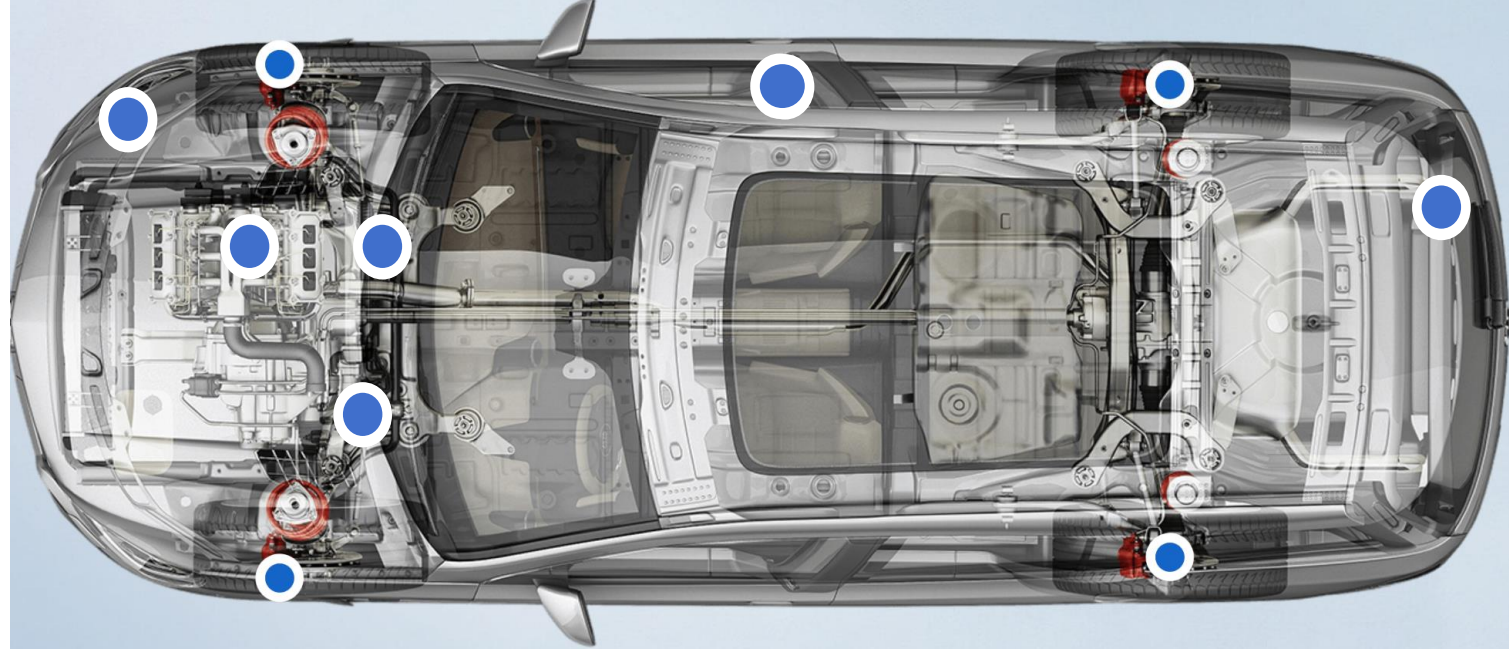
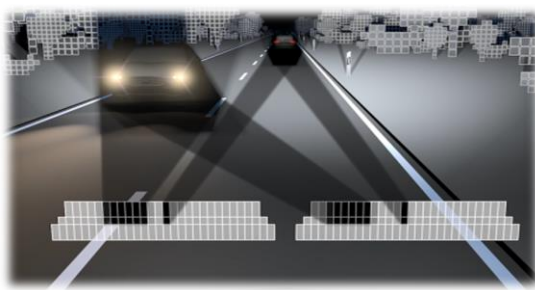
• Sensor



• Silicone Headlights



Automotive Product Category – Sensor & Connector Series



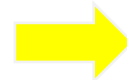
Sensor Series:

Oxygen, steering, tire pressure, temperature, pressure, liquid level, phase, wheel speed, flow, temperature and pressure.

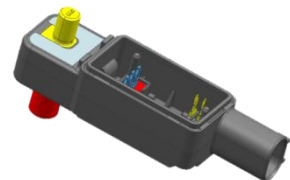
Connector Series:

ECU, Charging connector, and waterproof seal.

Components



Module



Automotive Product Category – Power Units (BUSBAR)



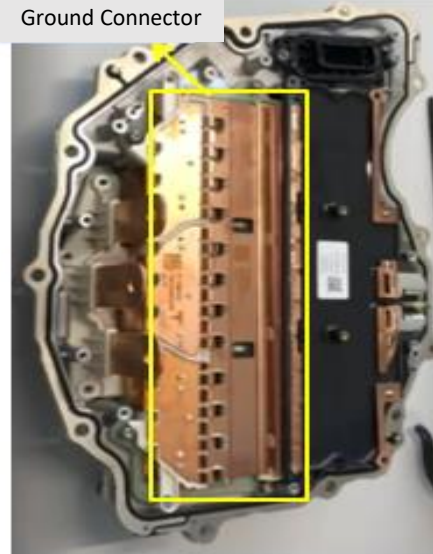
Inverter / Motor

Motor UVW Output / Ground / Busbar

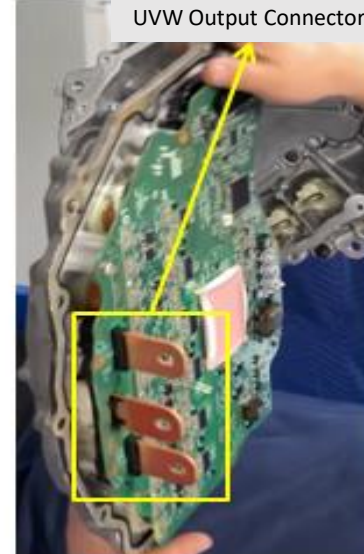


Three-in-one Power Module

Ground Connector

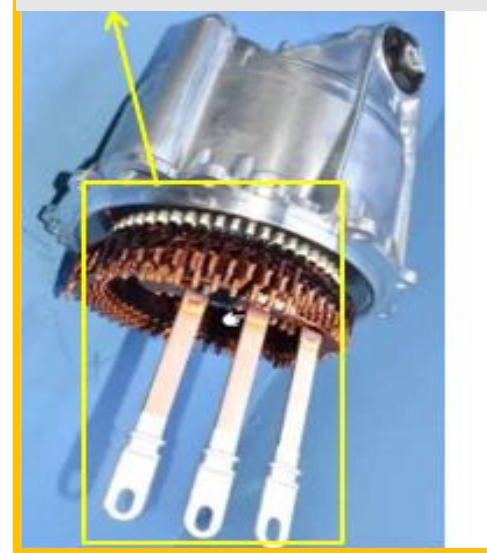


UVW Output Connector



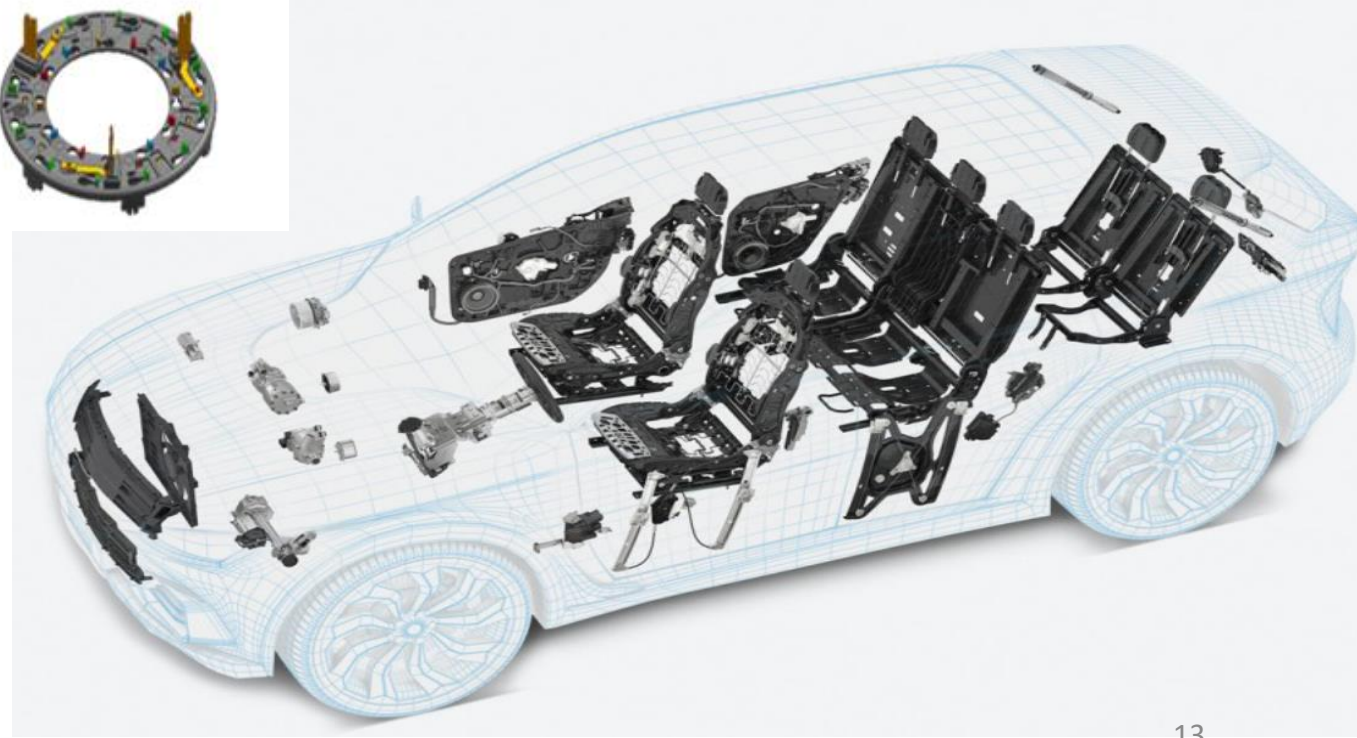
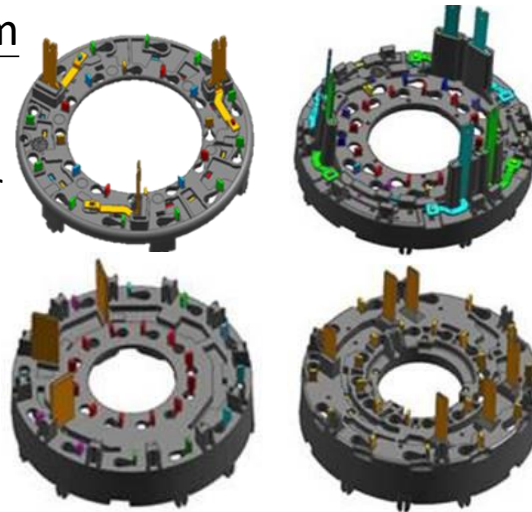
Motor UVW Output / Ground / Busbar Connector

Phase/Wye Busbar Phase Connector



Stator and Rotor Busbar Product

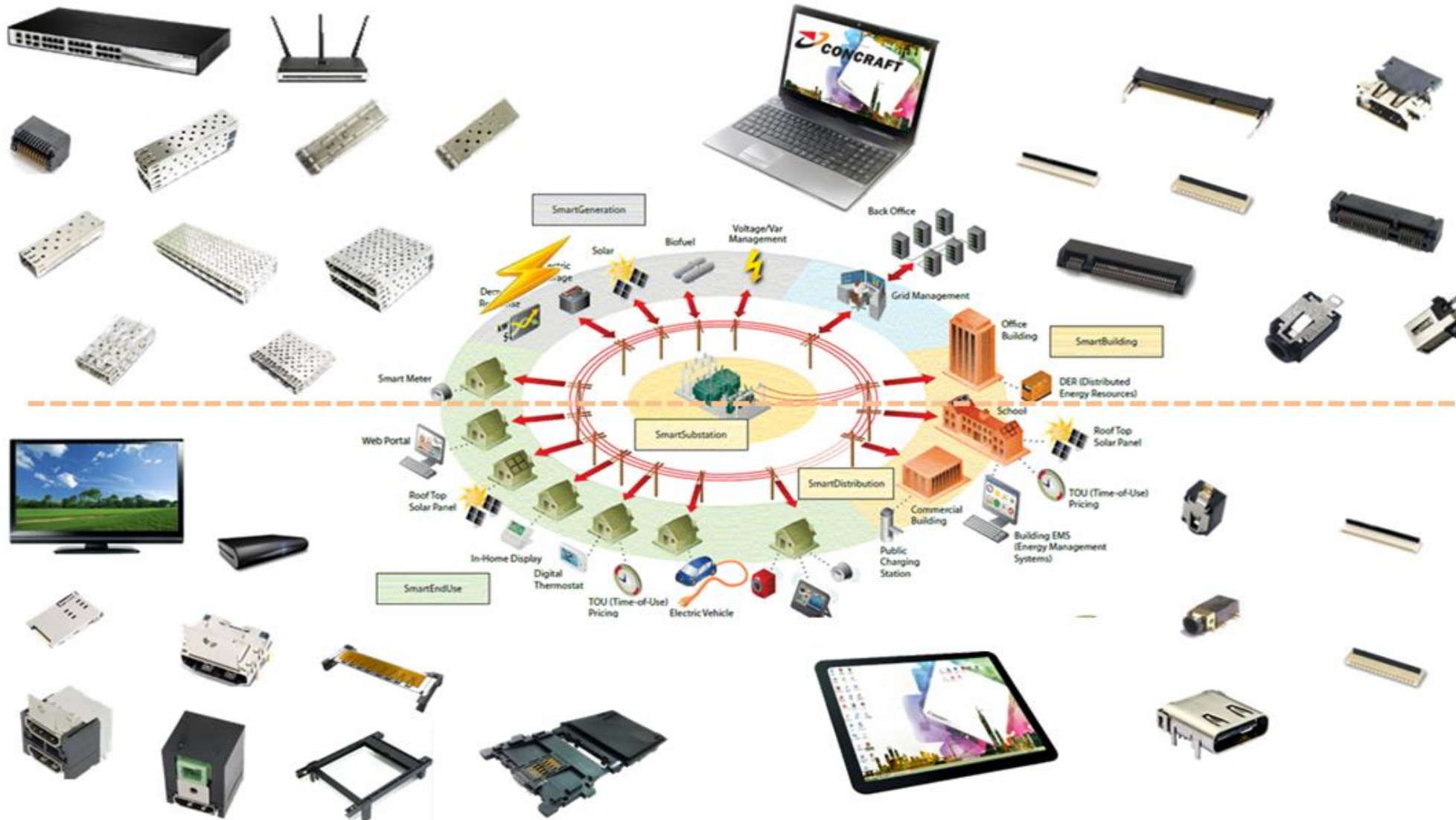
Automotive Product Category – Ring Electromechanical Parts (Electronic motor power unit)



Electronic Power Assist System

- Brake Assist Power
- Tailgate Open
- Cooling Air Conditioner Power
- Electric Seat
- Automatic Power Steering

Connector Products



Products:

DC JACK
DDR
EXPRESS CARD
FPC
HDMI
MINI PCI
NGFF
PCMCIA &
CARD BUS
RCA
SFP
SIM CARD
SMART CARD

Applications:

Notebook
LED TV
Set-top Box
Net Working
Mobile Device

Medical Products

Medical products
target areas :

Ultra-precision
machining related

(Particular) silicone
related applications

Disposable
Consumables

Invasive Products



Flexible Electrode Sensor

Process: Injection molding

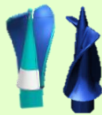
Appearance requirements: Roughness RA 0.1mm

Production environment: 10W dust-free workshop



Laryngoscope spatula

Implantation of minimally invasive surgical catheters



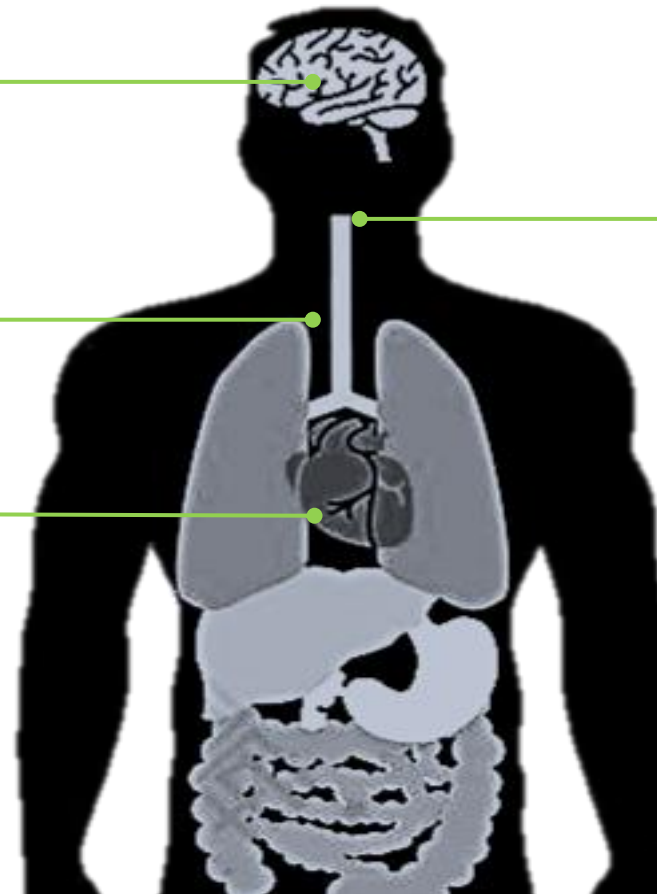
Process: Injection molding

Appearance requirements: Roughness RA 0.1mm
& coaxiality 0.015mm

Production environment: 10W dust-free workshop

Conductive silicone

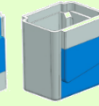
Detect the human body's micro-electrical signals, and
apply to the health monitoring of wearable devices
(heartbeat, heart rate and etc.)



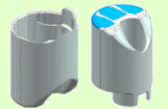
Endoscope



Laryngoscope



Endoscope housing



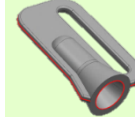
Cystoscope

Process: Double-shot injection molding

Appearance requirements: High specular surface,
roughness RA 5nm/flatness 5um

Production environment: 10W dust-free workshop

Outer housing



Process: Medical LSR injection molding

Appearance requirements: Roughness RA 5nm/
flatness 5um

Production environment: 10W dust-free workshop

Laryngoscope button



Process: One-shot plus double- shot injection
molding

Pulling force requirement: Up to 120N

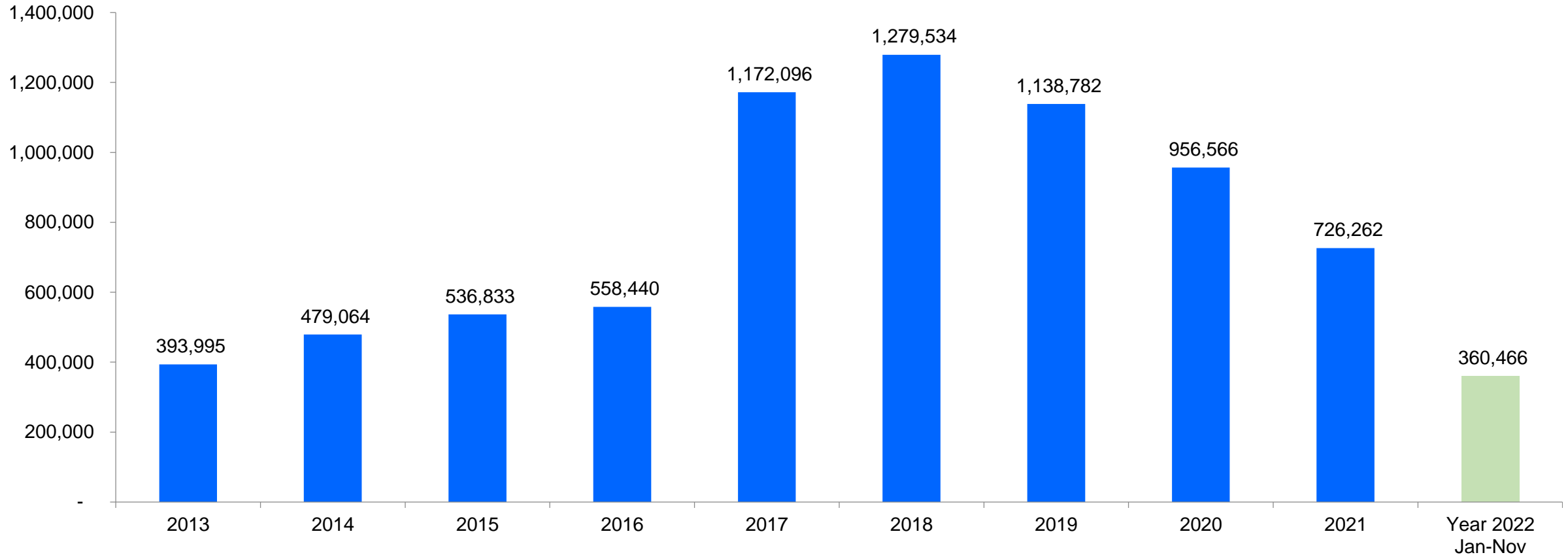
Production environment: 10W dust-free workshop



Performance & Prospect

Sales Revenue

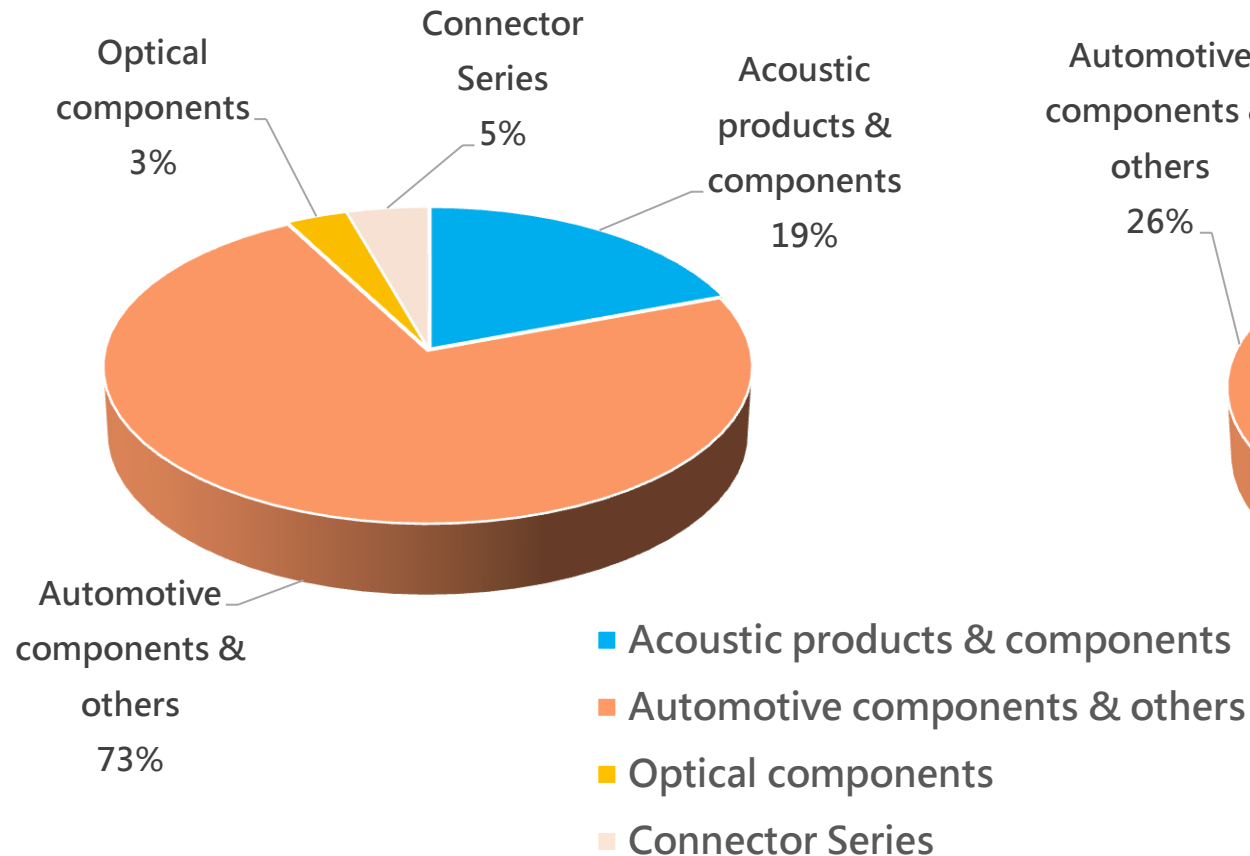
Unit: RMB thousands



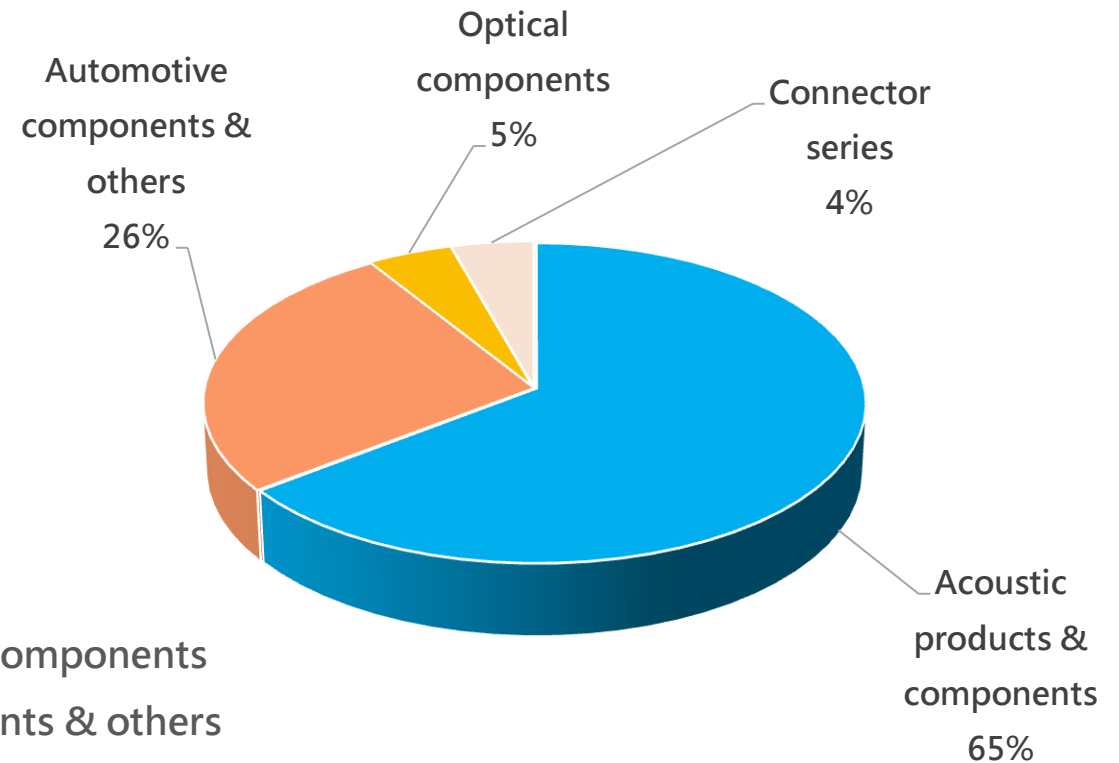
Year 2023 Sales Revenue 

Major Products and Sales Contents

2022 Q1-Q3

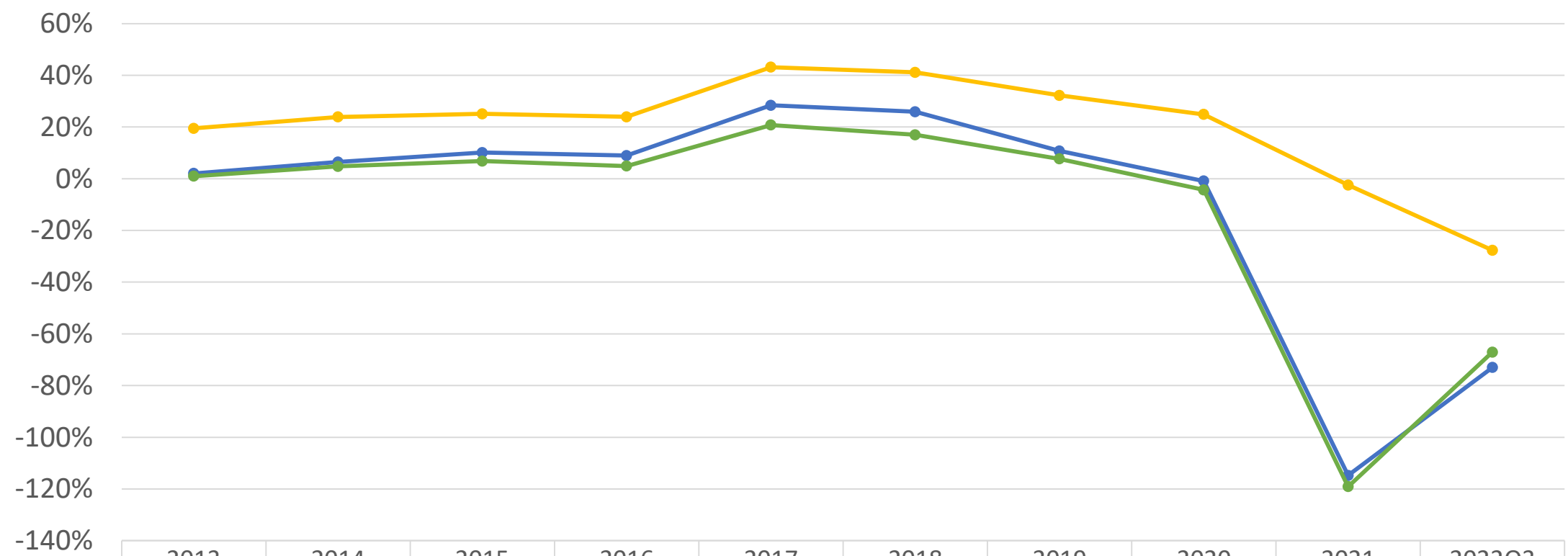


2021 Q1-Q3



Profit/Loss Situation

Three Profit Margins Trend Chart

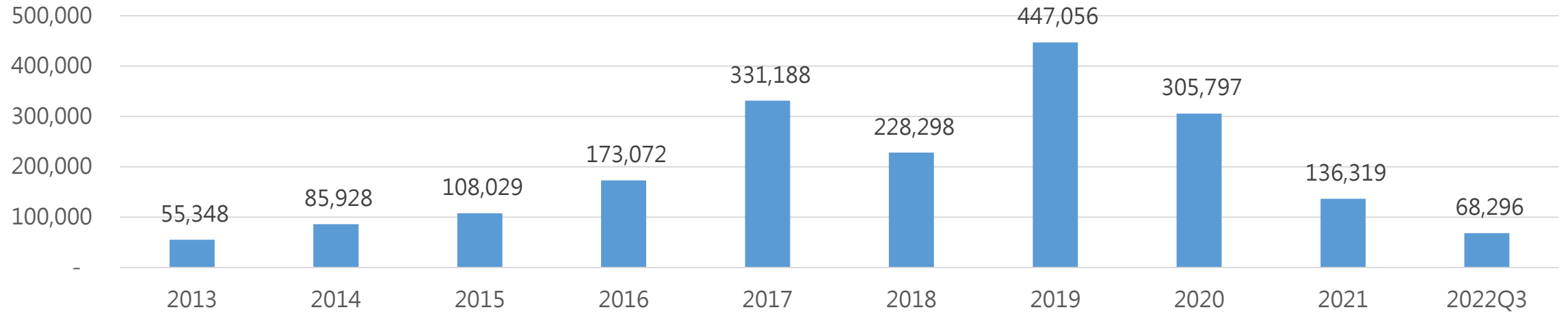


	2013	2014	2015	2016	2017	2018	2019	2020	2021	2022Q3
Gross Profit Margin	19%	24%	25%	24%	43%	41%	32%	25%	-2%	-28%
Operating Profit Margin	2%	6%	10%	9%	28%	26%	11%	-1%	-115%	-73%
Net Profit Margin	1%	5%	7%	5%	21%	17%	8%	-4%	-119%	-67%

CAPEX & EBITDA

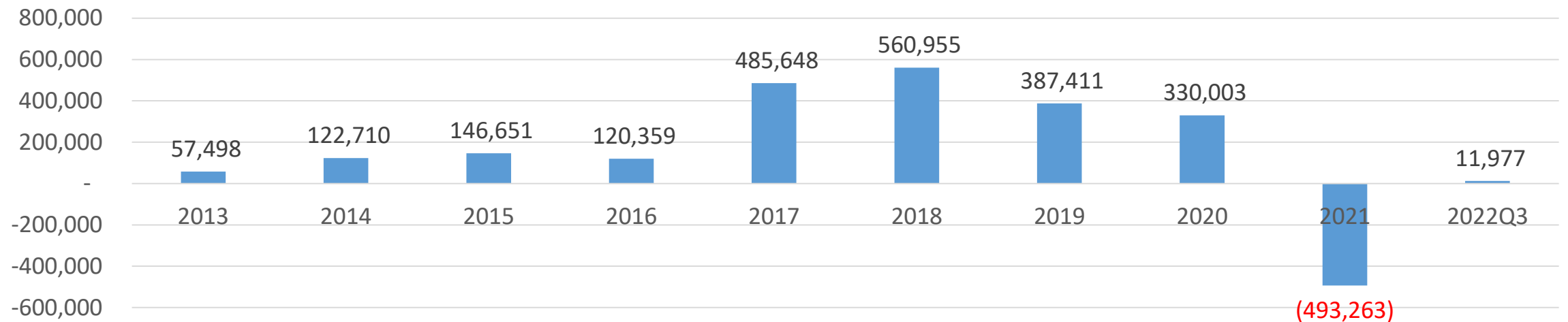
Unit: RMB thousands

CAPEX



Unit: RMB thousands

EBITDA



Future Development Goals and Plans

CONCRAFT Future Development Goals

1. Deepen cooperation with existing new energy vehicle brands and component factories, also continue to grow the market share of new energy vehicle components.
2. Expand other new energy vehicle brands.
3. Combined with the silicone LSR process, assist customers break through new product designs , further to raise the market share of new energy vehicle components.

CONCRAFT Operation Improvement Plans

1. Revitalize assets, reduce fixed operating costs, and then reduce capital costs.
2. Looking for strategic investors to introduce investment funds and improve the financial structure.
3. Reduce capital to offset the losses, thereby reducing the scale of operations.